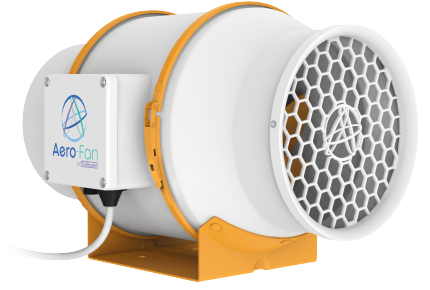


V-6

6 Inch Inline Duct Ventilation Fan

The 6-inch Inline Duct Ventilation Fan is a compact and efficient device designed to improve air circulation and ventilation in indoor spaces. With its powerful motor, it moves a significant volume of air, removing stale air, and humidity. Its versatile design allows easy installation in various duct systems, ensuring a fresh and comfortable environment. Ideal for the grow room settings, this fan is a reliable solution for maintaining optimal indoor air quality.



Specification

V-6

Operating voltage

Operating voltage 100-277VAC, 50/60Hz

Rated current

Rated current 1.0A Max.

Rated input power

Rated input power 66W Max.

Max. air flow

Max. air flow 360cfm

Max. static air pressure

Max. static air pressure 459Pa

Operating temperature

Operating temperature -4~140°F

Connection Diameter

Connection Diameter Φ 150mm / 5.91inch

Net Weight

Net Weight 2.35KG / 5.18lbs

No. of Blades

No. of Blades 8

Exterior Dimension

Exterior Dimension 12.48" / 317mm(L) x
8.89" / 225.7mm(W) x
 Φ 5.79" / 147mm(H)

Link Up

V-6

